

WEST STRATEGIC NEIGHBOURHOOD FORUM

Day: Thursday
Date: 21 March 2024
Time: 6.30 pm
Place: Zoom

Item No.	AGENDA	Page No
1.	APOLOGIES FOR ABSENCE To receive any apologies for absence from Members of the Forum.	
2.	MINUTES To receive the minutes of the meeting of the West Strategic Neighbourhood Forum held on 25 January 2024.	1 - 4
3.	ANTI-SOCIAL BEHAVIOUR POLICY AND RESILIENT COMMUNITIES TAMESIDE FUND To receive a presentation from the Assistant Director, Operations and Neighbourhoods.	5 - 16
4.	PLACES FOR EVERYONE To receive a presentation from the Planning Policy Team Manager.	17 - 40
5.	LEVELLING UP FUND BID FOR DENTON AND RELATED ACTIVE TRAVEL PROJECTS To receive a presentation from the Director of Place.	41 - 48
6.	DATE OF NEXT MEETING To note that the next meeting of the West Strategic Neighbourhood Forum is scheduled to take place on 20 June 2024.	

From: Democratic Services Unit – any further information may be obtained from the reporting officer or from Natasha Matthews, Senior Democratic Services Officer, to whom any apologies for absence should be notified.

This page is intentionally left blank

Agenda Item 2

WEST STRATEGIC NEIGHBOURHOOD FORUM

25 January 2024

Commenced: 6.30 pm

Terminated: 7:30pm

Present: Councillors Quinn (Chair), Cooney, Gwynne, A Holland, B Holland, Jones, Martin, Mills, Ricci, Reid, M Smith, T Smith, Ward and Warrington.

In Attendance:

Julian Jackson	Director of Place
Ashley Hughes	Director of Resources
Gemma McNamara	Interim Assistant Director, Finance
Alison White	Head of Service, Learning Disabilities and Mental Health
James Mallion	Assistant Director of Public Health
Gordon Murray	Children's Services Consultant
Kathy Bibby	Senior Planning Policy Officer

Apologies for Absence: Councillors Axford, Boyle, Newton and Naylor

14. MINUTES

RESOLVED

The minutes of the meeting of the West Strategic Neighbourhood Forum held on 12 October 2023 were approved as a correct record.

15. BUDGET CONSULTATION

The Chair welcomed the Director of Resources, who attended the Forum to deliver a presentation with regards to the Budget Consultation for 2024/25.

The Director of Resources provided Members with an overview of the national landscape and key challenges faced within Tameside which included;

- Additional demand for services across the front line;
- Fragile markets for social care and housing supply;
- Increases in complexity of care needs in Social Care;
- Increased number of young people with Educational, Health and Care Plans
- Increased contacts due to economic environment;
- Digital Transformation.

An overview of the budget reductions and the revised budget gap was presented to Members. It was explained that the budget consultation went live on 19 December 2023 and 193 responses had been received. The Director of Resources emphasised the importance of residential engagement in the consultation process in order to help shape the priorities for the 2024/25 budget.

Members were further advised on the next steps for the period 2024/29 and the Director of Resources explained that there would be a greater use of Neighbourhood Forums to feed into the budget consultation in order to gain increased Member engagement on priorities within each locality.

The Chair thanked the Director for Resources for the informative presentation.

RESOLVED

That the content of the presentation be noted.

16. CARER STRATEGY

The Chair welcomed Alison White, Head of Service, Learning Disabilities and Mental Health, who gave a presentation in respect of Tameside Carers Strategy.

Members were informed that a Carer was a person who provided informal and/or unpaid support to a partner, family member, friend or neighbour who was ill, struggling or disabled and could not manage without assistance. It was explained that throughout 2022-2023, Carers across Tameside were consulted with to understand how they could be best supported and what was important to them as a carer.

Members were advised that officers continued to work with partners across Social Care, Health and VCSF in order to develop a delivery plan for the implementation of the strategy. It was explained that the Carers Strategy was expected to launch in March 2024 and feedback would be obtained from Carers annually on the progress of the strategy.

It was explained that the Tameside Carers Centre provided emotional support, advocacy, advice and guidance for Carers, along with Carers courses and activities to support Carers. With regards to the Carers Offer in Tameside, Members were informed that Carers can ask for a Carers needs assessment in their own right of a joint assessment with the person they care for. Members were provided with information on the services that supported Carers within Tameside.

The Chair thanked Ms White for the thought provoking presentation.

RESOLVED

That the content of the presentation be noted.

17. HOW TO BE A FOSTER CARER

The Chair welcomed Gordon Murray, Children's Services Consultant who gave a presentation in respect of the Fostering Service.

It was explained that fostering was the support and care for a child when they couldn't live at home; providing a stable and caring environment; working closely with others involved in the welfare of the children being cared for; attendance at meetings – reviews and education; and to undertake training to develop fostering skills. It was further explained that there was no upper age limit and anyone could foster whether they were married, co-habiting, single, straight or gay. All ethnic and religious backgrounds were welcomed and there was no specific qualifications required to become a foster carer.

The various types of fostering was outlined and the approval process was explained to the Forum. Ongoing fostering support was provided via social workers and support workers with social workers assigned to the children; support was also available through the Fostering Network and there was a Buddy scheme, a training programme, support groups and allowances and fees.

Discussion ensued with regards to the presentation and it was explained that further details could be found through contacting: fosteringenquiries@tameside.gov.uk

The Chair thanked Mr Murray for the very interesting presentation and it was:

RESOLVED

That the content of the presentation be noted.

18. LOCAL PLAN

The Forum received a presentation from the Senior Planning Policy Officer, who provided Members with an overview of the Local Plan and outlined the opportunities for engagement and the activities that were intended to be undertaken in the short, medium and long term.

Members were advised that the Planning and Compulsory Purchase Act 2004 required each local planning authority prepared and maintained a Local Development Scheme, which was based on up-to-date evidence and examined by independently appointed inspectors. It was explained that the Local Development Scheme set out key milestones for plan making which the Council proposed to deliver, and identified the nature and scope for the delivery of Development Plan Documents that were the local planning framework for Tameside. The Senior Planning Policy Officer summarised the key subject areas within a plan which included the location of development, protection of assets and meeting needs.

It was explained that the Council's Local Development Scheme was published in July 2023 and provided detail to the current and intended planning frameworks for the Borough, and provided clarity to the associated documents that were collectively included within the Borough's Local Plan. It was further explained that in Tameside, the Local Plan consisted of a number of documents which formed policy framework within Greater Manchester.

The Senior Planning Policy Officer provided a summary of the plans which were currently undergoing consultation. With regards to Places for Everyone, it was explained that 177 consultation responses had been received which were to be considered and included within the inspectors report. It was reported that adoption was to be considered in early 2024.

Members were provided with an update on Homes Spaces Places which replaced any remaining elements of the Unitary Development Plan. It was explained that officers consulted on an integrated assessment in July 2023 and this was currently in the Plan Scoping stage.

RESOLVED

That the content of the presentation be noted.

19. SERIOUS VIOLENCE STRATEGY

The Forum received a presentation from the Assistant Director of Population Health, who provided Members with an overview of the Tameside Serious Violence Strategy 2024-2029.

It was explained that the Serious Violence Duty required 'Specified Authorities' for a local government area to work together and plan to prevent and reduce serious violence. The Duty further encouraged a 'public health approach' which had been done for GM and Tameside. Members were advised that Tameside partners worked closely with the GM Violence Reduction Unit (VRU) who had produced a Serious Violence Strategy for Greater Manchester.

The Assistant Director of Population Health provided the Forum with an overview of Serious Violence within Tameside. It was explained that Tameside had experienced an increase in all reported violent crimes and was on an upward trend. Members were advised that high-risk domestic abuse had a high prevalence in Tameside and a high proportion of violent crime, particularly knife crime, was associated with Domestic Abuse in Tameside.

Members were provided with the priorities for tackling serious violence in Tameside which included;

- Priority 1: Community-Led Approach;
- Priority 2: Early and Timely Intervention;
- Priority 3: Partnerships for Change;
- Priority 4: Equality, Equity and Justice;
- Priority 5: Trauma Responsive Support for Communities in Tameside.

It was further outlined that the strategy for Tameside would be led by the Community Safety Partnership and officers aimed to develop an action plan to deliver the Tameside Serious Violence Strategy 2024/25. Members were pleased to hear that ongoing conversations and involvement with people living in Tameside, especially those affected by violence, was a key part of the strategy and it was therefore;

RESOLVED

That the content of the presentation be noted.

20. FLU IMPACT & IMPACT OF DOCTORS STRIKES

The Forum received a presentation from the Assistant Director for Population Health, who provided an update on the flu vaccination uptake for Autumn-Winter 2023/24.

An overview of the seasonal flu vaccination uptake for 2023/24 was provided to Members and it was further explained that uptake had been lower amongst pregnant women, carers and toddlers. The Assistant Director for Population Health advised that this was related to issues around access and a perception that the risk from flu was not as great among these groups.

The Forum were advised that vaccinations not only provided individual protection but also made it harder for viruses to spread between people, including those who were more vulnerable and/or were unable to be vaccinated.

Members were advised that work was ongoing to increase uptake amongst those groups where uptake had been lower. Pregnant women would be offered the flu vaccine at antenatal clinics and work to tackle misconceptions around the flu vaccine amongst groups was ongoing.

The Forum were provided with an update with regards to the impact of recent doctors strikes. It was explained that there had been an impact across GP practices, however it was explained that there had not been a direct impact on flu vaccination delivery.

Wide ranging discussion ensued with relation to the presentation and the Chair thanked the Assistant Director for Population Health for the interesting presentation.

RESOLVED

That the content of the presentation be noted.

21. DATE OF NEXT MEETING

RESOLVED

That the next meeting of the West Strategic Neighbourhood Forum is scheduled to take place on 21 March 2024, be noted.

CHAIR

Community Safety

Anti-social Behaviour Policy

Page 5

What is Anti-social Behaviour?

Anti-social Behaviour (ASB) is defined by section 2, paragraph 1 of the Anti-social Behaviour, Crime and Policing Act 2014 as:

- a) conduct that has caused, or is likely to cause, harassment, alarm or distress to any person,
- b) conduct capable of causing nuisance or annoyance to a person in relation to that person's occupation of residential premises, or
- c) conduct capable of causing housing-related nuisance or annoyance to any person.

This is a very wide definition.

What is Anti-social Behaviour?

- **Personal** - incidents that deliberately target an individual or group of people, rather than the community.
- **Nuisance** - incidents affecting the community, rather than an individual victim. This is when an act, thing or person causes the community trouble, annoyance, or suffering.
- **Environmental** - incidents where individuals or groups impact their wider surroundings. It includes environmental damage and the misuse of public spaces or buildings.

Powers

Within the statutory guidance there is a clear focus of putting the victims first.

The act provides the police, local authorities and other local agencies with flexible tools and powers that they can use to respond quickly and effectively to antisocial behaviour.

These include:

- Civil Injunction
- Criminal Behaviour Order
- Public Space Protection Order
- Community Protection Notice
- Dispersal Power
- Closure Power

Partnership Working

Anti-social Behaviour cannot be dealt by one agency alone.

There needs to be a multi-agency approach to dealing with the issues that arise as a result of anti-social behaviour.

There is a statutory duty placed on the defined Responsible Authorities which are the Local Authority, Police, Fire and Rescue, Probation and Clinical Commissioning Groups who are to work together to deal with anti-social behaviour.

This is achieved locally through strong partnership relationships fostered through the Community Safety Partnership.



Proposed Policy

There is no statutory duty on the Local Authority to produce an Anti-social Behaviour Policy.

However, Tameside Council have taken the view that an Anti-social Behaviour Policy is adopted in order to reassure and increase public confidence that deterring and dealing with instances of anti-social behaviour is a top priority for the Council's ASB service.

The ASB Service draft policy document is devised into the following sections;

- Policy Statement and Commitment
- Our Approach and Responsibilities
- Definition
- Reporting Anti-social Behaviour
- Service Standard
- Informal action / Interventions we can take
- Legal Powers
- ASB Case Review
- Multi- Agency Partnership Approach
- Safeguarding of Staff
- Complaints

Action taken in formation of the Policy

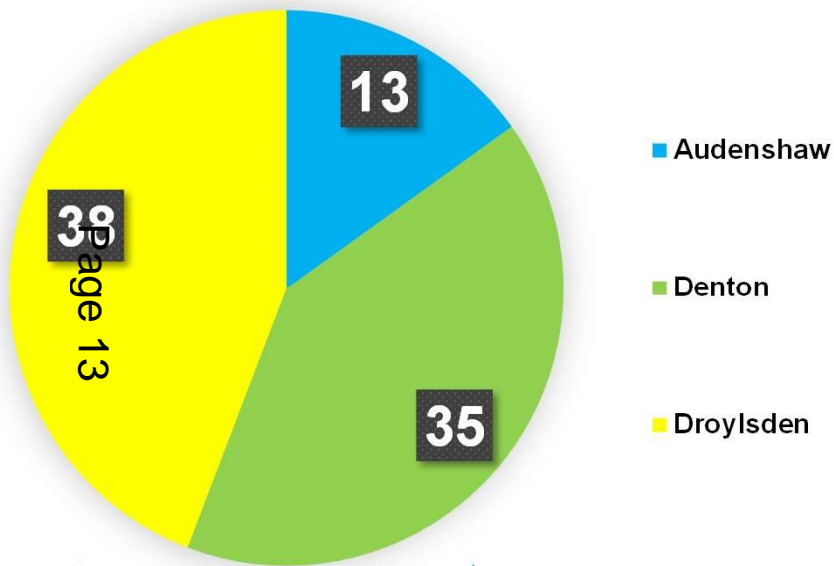
- Incorporated the considerations of the Governments 'Anti-social Behaviour Action Plan'.
- Incorporated the considerations of the Local Government & Social Care Ombudsman published in-focus report; "Out of Order": learning lessons from complaints about anti-social behaviour'
- Draft of the Policy was presented to the Tameside Public Engagement Network (PEN). The feedback received incorporated into the formation of the policy.
- Draft policy presented to the Council's Place and External Relations Scrutiny Panel and furthermore a Scrutiny Committee workshop from which recommendations have helped development of the policy.

Governance and next steps

- Permission is being sought to commence with a 12-week public consultation period on the policy
- The policy will be presented to the Executive Cabinet on 27 March 2024
- Subject to approval there will be a 12-week period of public consultation
- A further report will be produced taking into account feedback from the consultation, with a view to formal adoption of the policy

ASB Reports 2023 - West

ASB Reports 2023 - Audenshaw, Denton and Droylsden



ASB Report Resolution - Audenshaw, Denton and Droylsden



Community Safety Partnership

Resilient Communities Fund

Page 14



Resilient Communities Fund

- Building on the success of the previous year's community grant schemes, the Tameside Community Safety Partnership (CSP) have launched the 'Resilient Communities Fund' 2024-25
- As with previous grant schemes, the fund is devolved from the annual grant the CSP receive from the GM Deputy Mayors Office
- Applications to fund are being received between the 1st – 29th March
- All ward members have been sent an email containing the relevant information

Page 15



Thank you

communitysafety@tameside.gov.uk

asb@tameside.gov.uk



Places for Everyone



Places for Everyone

Page 18



Context

- 5 March 2024 Tameside Council resolved to adopt Places for Everyone.
- Resolution is with effect from 21 March 2024 when it will become part of Tameside's Development Plan
- The culmination of a decade of work, the single largest joint plan prepared nationally
- 5 boroughs have now adopted (Salford, Wigan, Tameside, Bolton & Oldham)



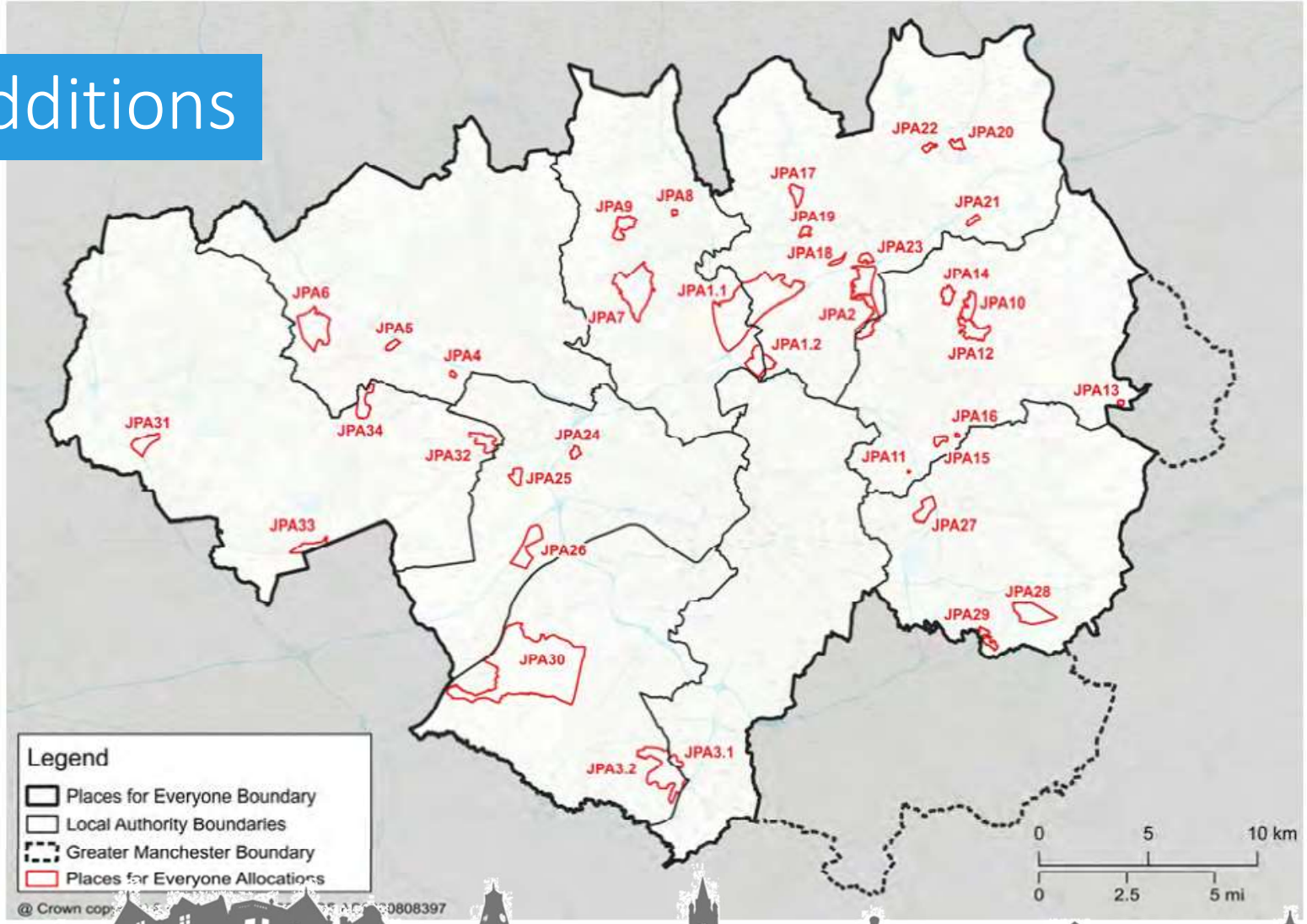
Policy Overview

PfE Policy	Policy Name	Chapter
JP-Strat 1	Core Growth Area	Strategy
JP-Strat 2	City Centre	Strategy
JP-Strat 3	The Quays	Strategy
JP-Strat 4	Port Salford	Strategy
JP-Strat 5	Inner Areas	Strategy
JP-Strat 6	Northern Areas	Strategy
JP-Strat 7	North-East Growth Corridor	Strategy
JP-Strat 8	Wigan-Bolton Growth Corridor	Strategy
JP-Strat 9	Southern Areas	Strategy
JP-Strat 10	Manchester Airport	Strategy
JP-Strat 11	New Carrington	Strategy
JP-Strat 12	Main Town Centres	Strategy
JP-Strat 13	Strategic Green Infrastructure	Strategy
JP-Strat 14	A Sustainable and Integrated Transport Network	Strategy
JP-S 1	Sustainable Development	Sustainable and Resilient Places
JP-S 2	Carbon and Energy	Sustainable and Resilient Places
JP-S 3	Heat and Energy Networks	Sustainable and Resilient Places
JP-S 4	Resilience	Sustainable and Resilient Places
JP-S 5	Flood Risk and the Water Environment	Sustainable and Resilient Places
JP-S 6	Clean Air	Sustainable and Resilient Places
JP-S 7	Resource Efficiency	Sustainable and Resilient Places
JP-J 1	Supporting Long-Term Economic Growth	Places for Jobs
JP-J 2	Employment Sites and Premises	Places for Jobs
JP-J 3	Office Development	Places for Jobs
JP-J 4	Industry and Warehousing Development	Places for Jobs
JP-H 1	Scale of New Housing Development	Places for Homes
JP-H 2	Affordability of New Housing	Places for Homes
JP-H 3	Type, Size and Design of New Housing	Places for Homes

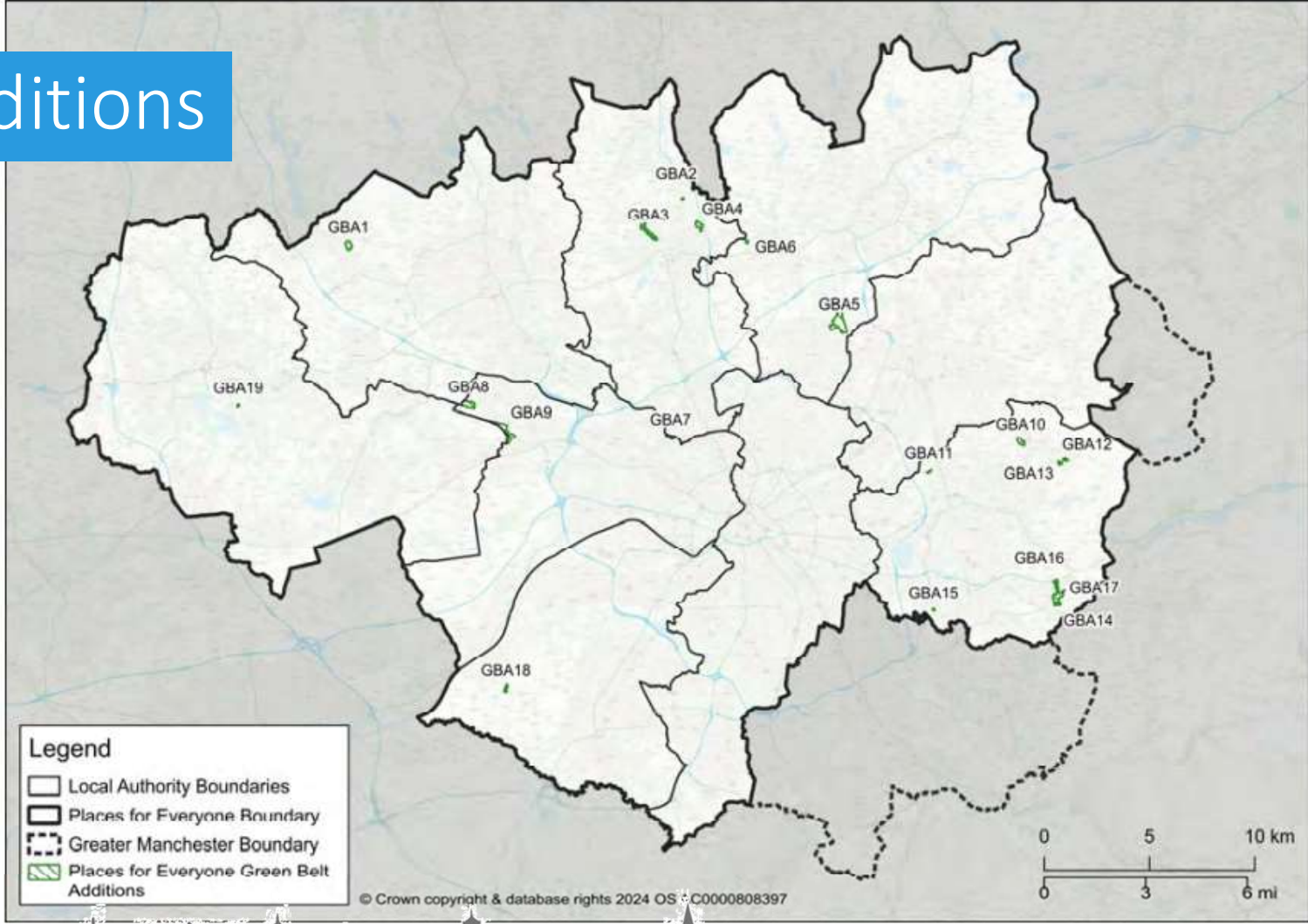
PfE Policy	Policy Name	Chapter
JP-H 4	Density of New Housing	Places for Homes
JP-G 1	Landscape Character	Greener Places
JP-G 2	Green Infrastructure Network	Greener Places
JP-G 3	River Valleys and Waterways	Greener Places
JP-G 4	Lowland Wetlands and Mosslands	Greener Places
JP-G 5	Uplands	Greener Places
JP-G 6	Urban Green Space	Greener Places
JP-G 7	Trees and Woodland	Greener Places
JP-G 8	Standards for Greener Places	Greener Places
JP-G 9	A Net Enhancement of Biodiversity and Geodiversity	Greener Places
JP-G 10	The Green Belt	Greener Places
JP-G 11	Safeguarded Land	Greener Places
JP-P 1	Sustainable Places	Places for People
JP-P 2	Heritage	Places for People
JP-P 3	Cultural Facilities	Places for People
JP-P 4	New Retail and Leisure Uses in Town Centres	Places for People
JP-P 5	Education, Skills and Knowledge	Places for People
JP-P 6	Health	Places for People
JP-P 7	Sport and Recreation	Places for People
JP-C 1	Our Integrated Network	Connected Places
JP-C 2	Digital Connectivity	Connected Places
JP-C 3	Our Public Transport	Connected Places
JP-C 4	Streets For All	Connected Places
JP-C 5	Walking and Cycling	Connected Places
JP-C 6	Freight and Logistics	Connected Places
JP-C 7	Transport Requirements of New Development	Connected Places
JP-D 1	Infrastructure Implementation	Delivering the Plan
JP-D 2	Developer Contributions	Delivering the Plan



Allocations and Additions

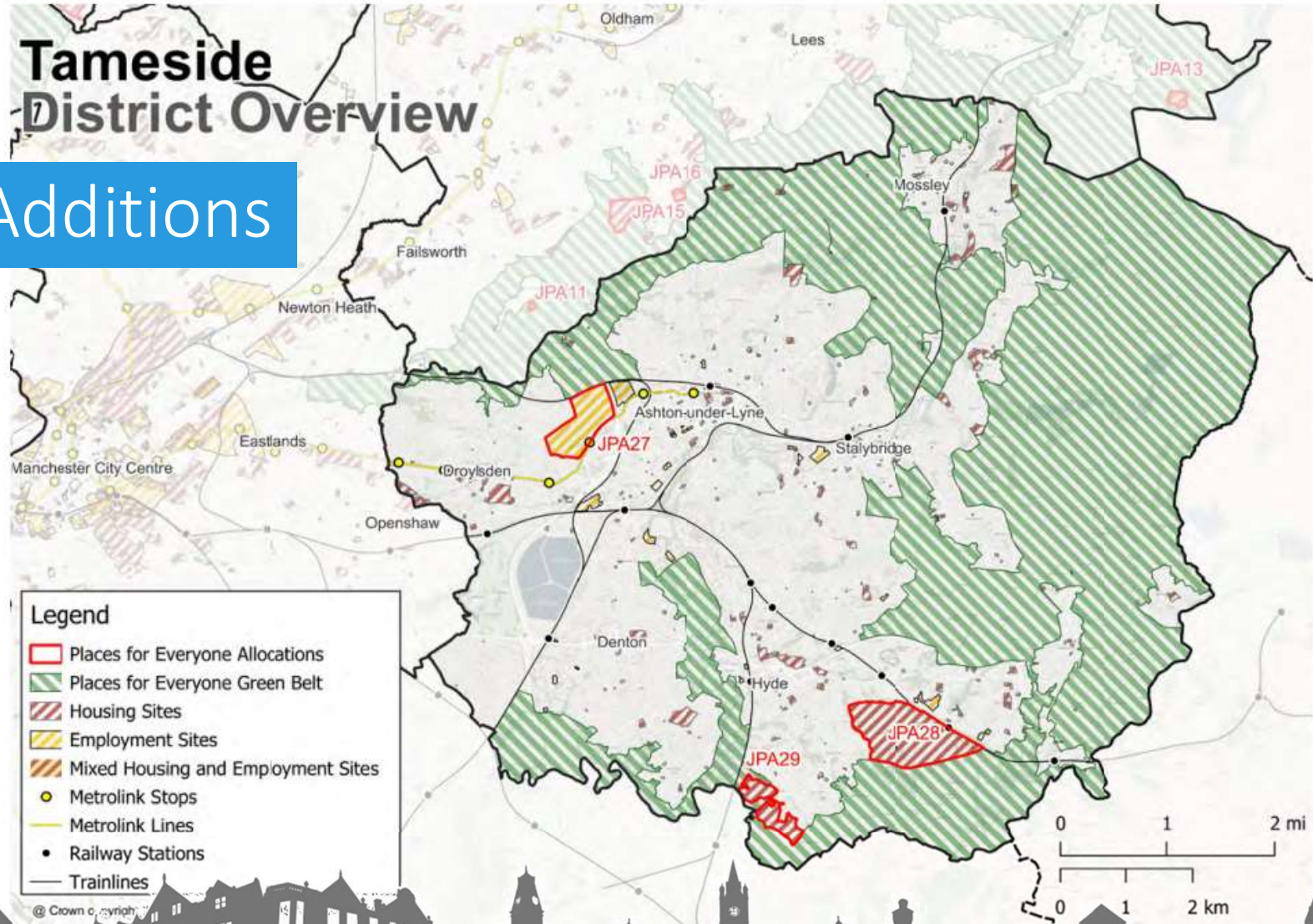


Allocations and Additions



Tameside District Overview

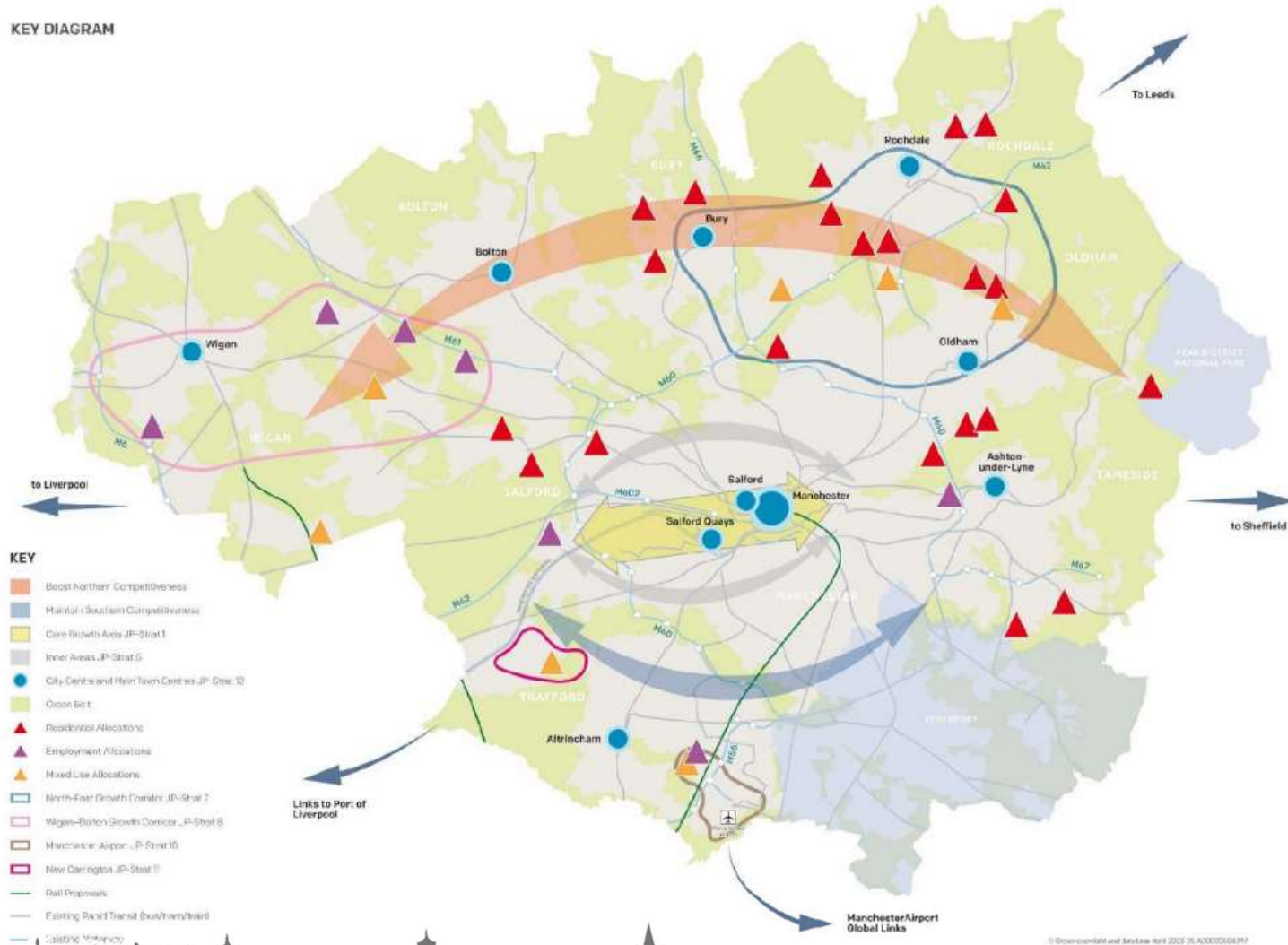
Allocations and Additions



Spatial Strategy

PfE Policy	Policy Name
JP-Strat 1	Core Growth Area
JP-Strat 2	City Centre
JP-Strat 3	The Quays
JP-Strat 4	Port Salford
JP-Strat 5	Inner Areas
JP-Strat 6	Northern Areas
JP-Strat 7	North-East Growth Corridor
JP-Strat 8	Wigan-Bolton Growth Corridor
JP-Strat 9	Southern Areas
JP-Strat 10	Manchester Airport
JP-Strat 11	New Carrington
JP-Strat 12	Main Town Centres
JP-Strat 13	Strategic Green Infrastructure
JP-Strat 14	A Sustainable and Integrated Transport Network

KEY DIAGRAM



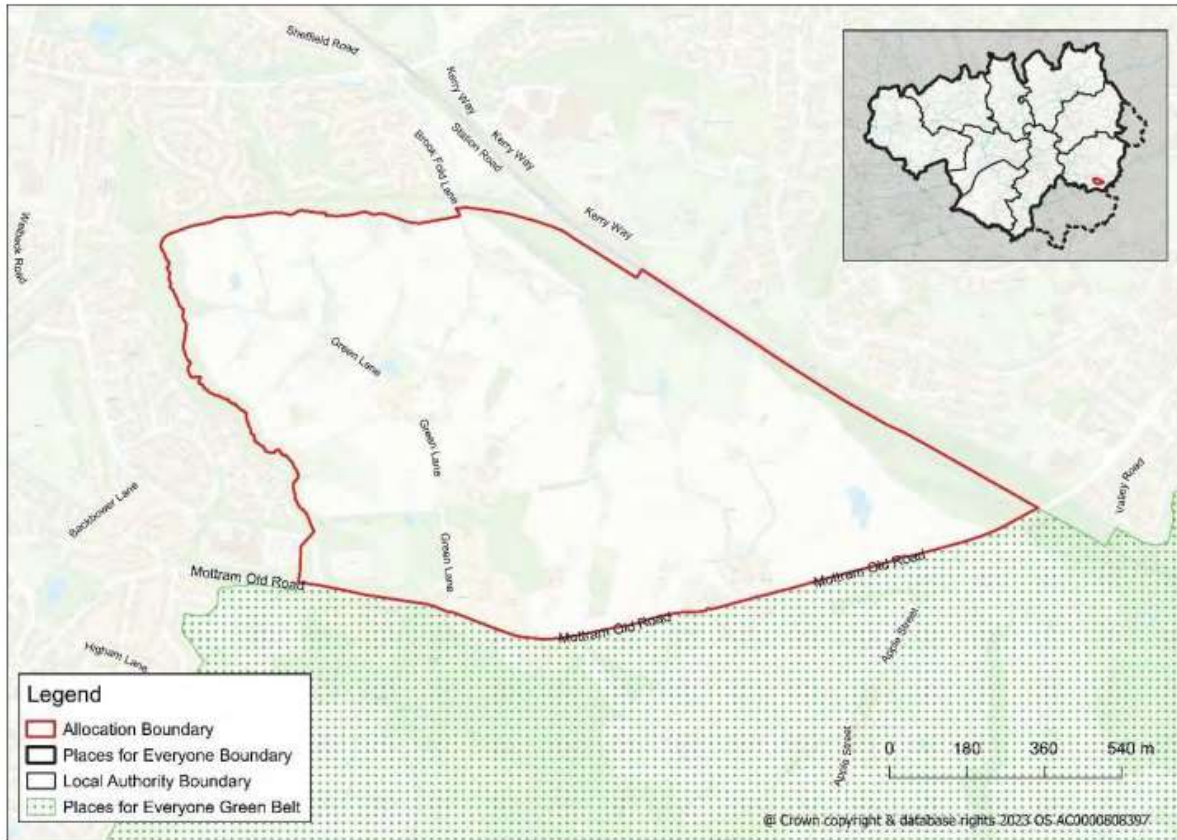
Sustainable & Resilient Places

- GM ambition to be a carbon neutral city region by 2038
- JP-S2 Carbon and Energy
 - Part 8 is instructive for new development.
 - Commercial and residential
 - Energy statement
- JP-S3 Heat and Energy Networks
 - Part 2 is instructive for new (Major) development.
 - Opportunity areas identified. (Ashton/Mossley/strategic sites)
- JP-S4 Flood Risk / JP-S5 Clean Air / JP-S6 Resource Efficiency
 - Part replacement of UDP policies MW14 and U4



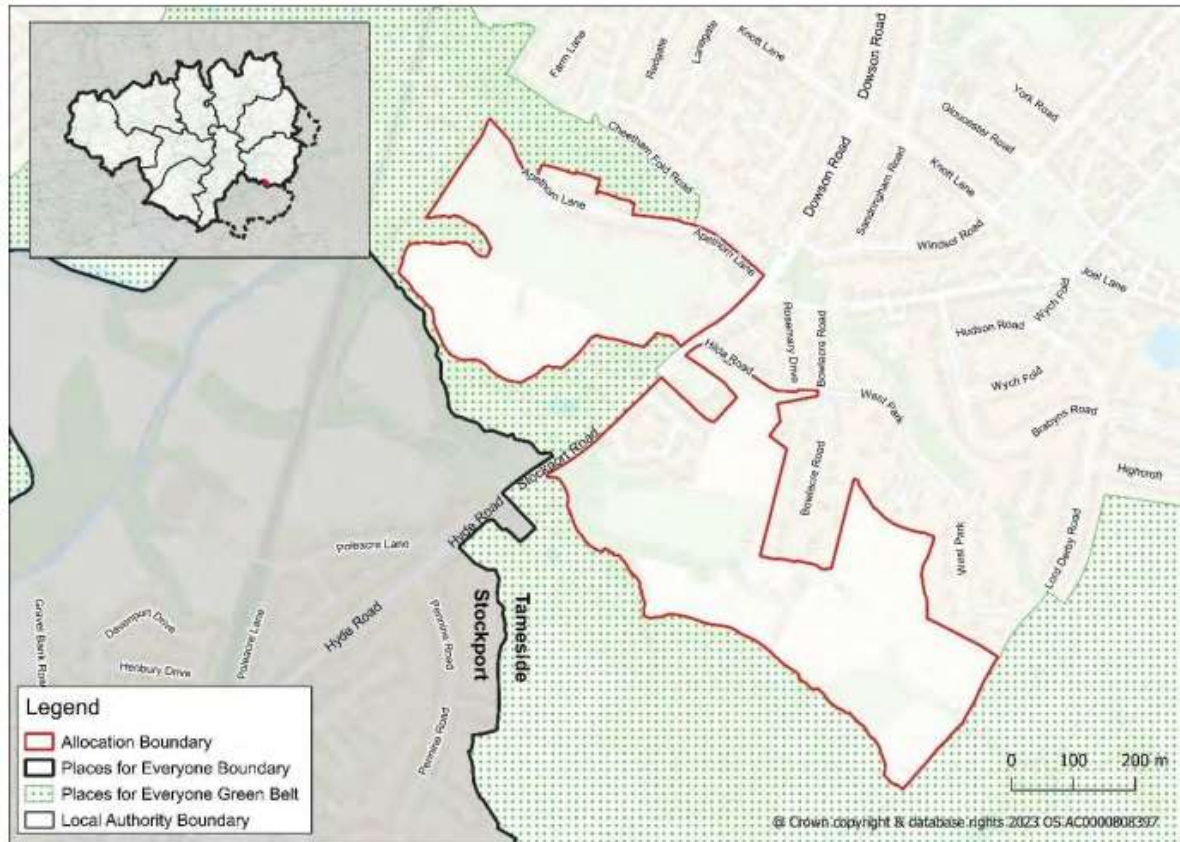
Homes – JPA28 – Godley Green Garden Village

Page 27



Homes – JPA29 – South of Hyde

Page 28

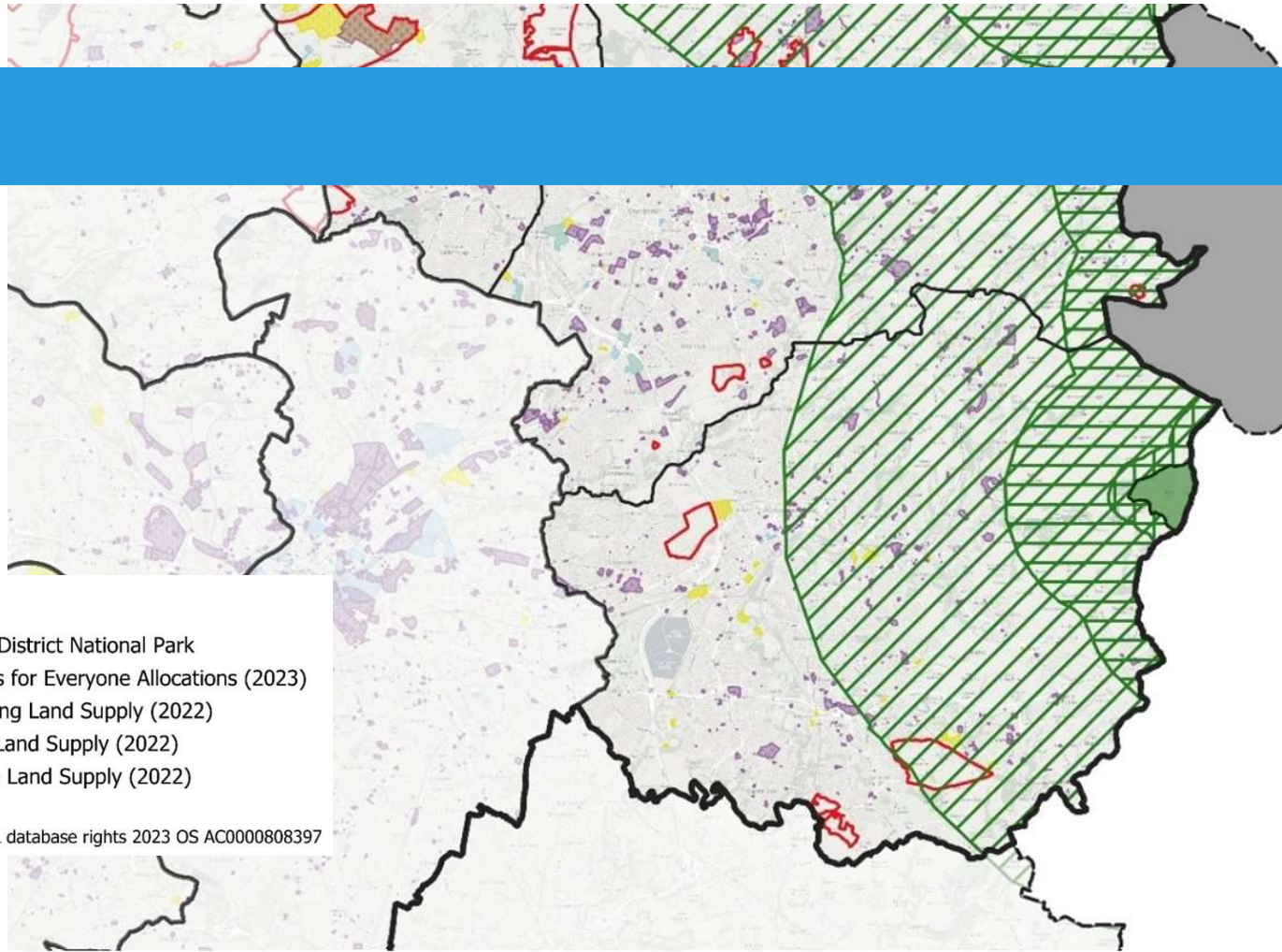


Homes

- **JP-H2 Affordability**
 - Board ambition, detail is a local matter
- **JP-H3 Type/Size/Design**
 - Instructive that all homes to meet nationally described space standards
 - Instructive that all homes to meet the accessible and adaptable homes standard Part M4(2)
- **JP-H4 Density**
 - Replaces UDP policy H7 para (b)
 - Instructive of distance/minimum density approach
 - Pressure relief exceptions



Greener



Legend

- Places for Everyone Boundary
- GM boundary
- Special Protected Areas/ Special Areas of Conservation
- SPA/SAC - 400m*
- SPA/SAC - 2.5km*
- SPA/SAC - 7km*
- Peak District National Park
- Places for Everyone Allocations (2023)
- Housing Land Supply (2022)
- I&W Land Supply (2022)
- Office Land Supply (2022)

* NOTE: Zones overlap

@ Crown copyright & database rights 2023 OS AC0000808397



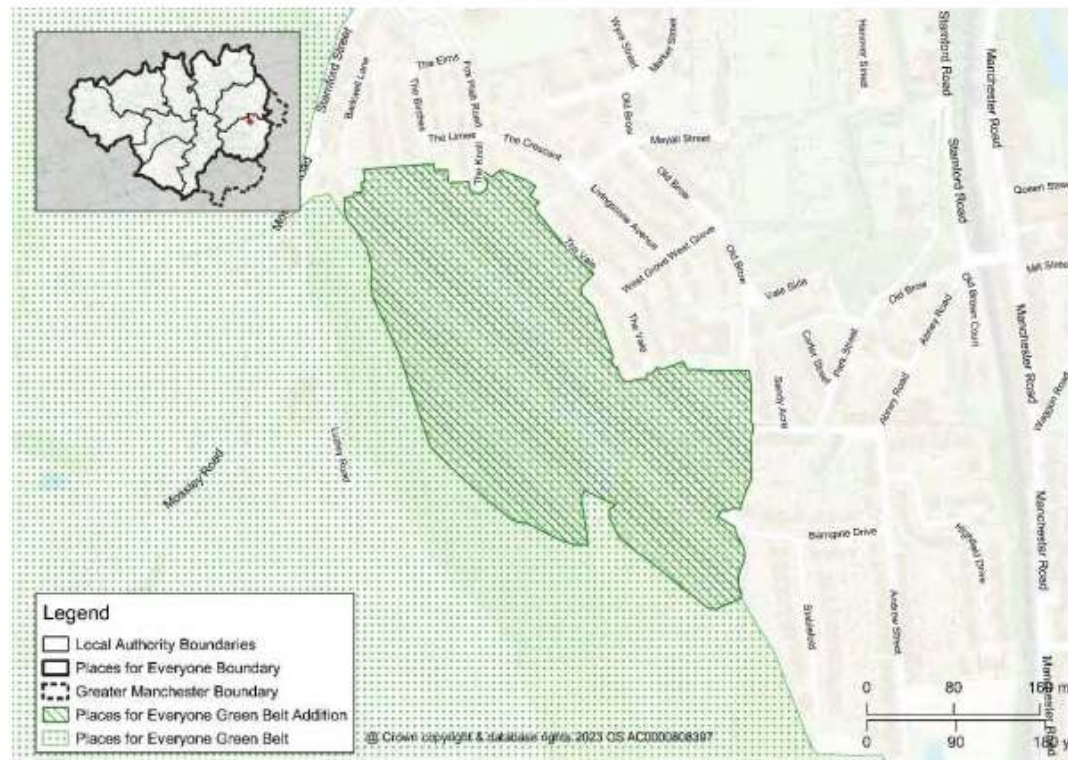
Greener

- JP-G7 Trees and Woodland
 - Considerably increase street trees in urban areas
 - Instructive requirement 2 for 1 basis when trees are lost through proposals
- JP-G8 A net enhancement of bio/geo diversity
 - Instructive RE avoid/mitigate/compensate approach
 - Don't fragment habitats
 - Achieve a measurable net gain in biodiversity of no less than 10%
- JP-G9 Green Belt
 - Replaces UDP policy OL1, OL2 and OL3
 - First designated in 1984, also about additions, new boundary established



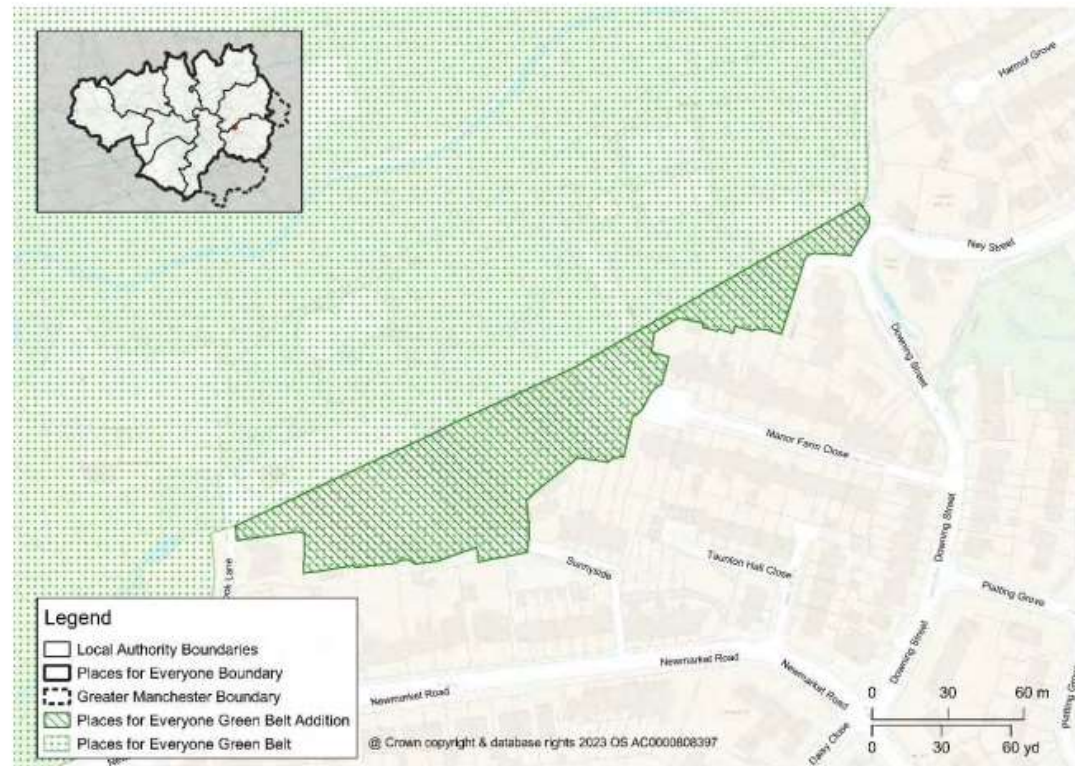
GBA 10 – Fox Platt, Mossley

Picture B.11 GBA 10 Fox Platt Mossley



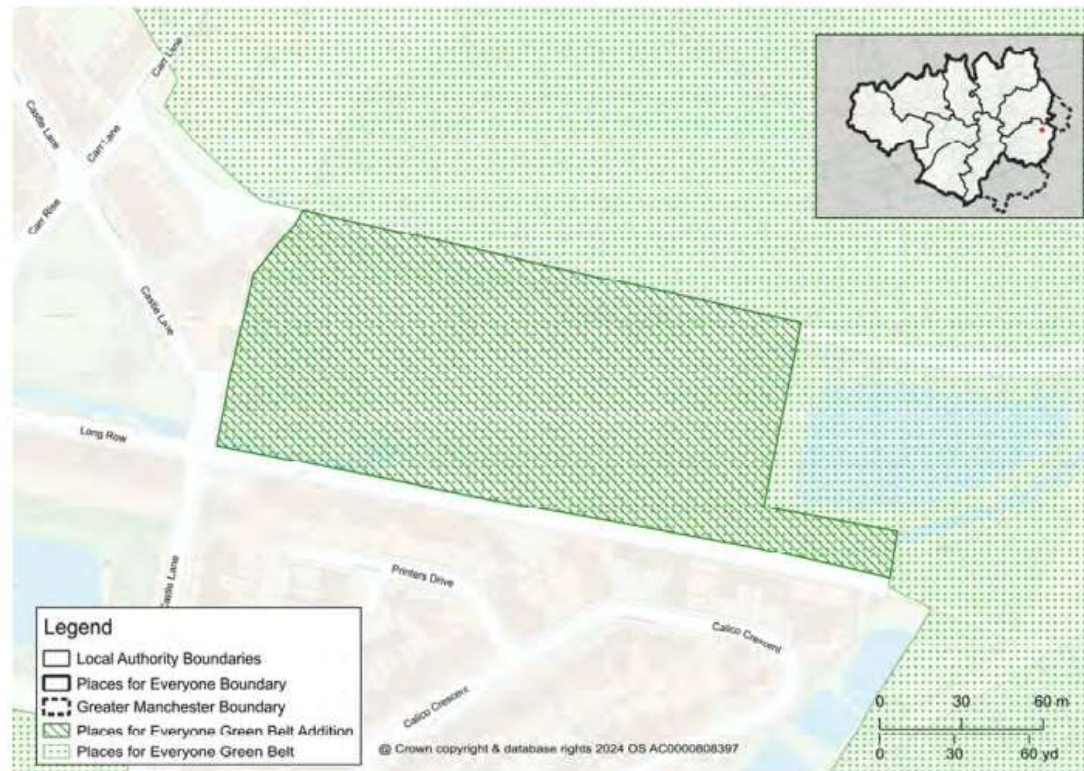
GBA 11 – Manor Farm Close, Ashton-Under-Lyne

Picture B.12 GBA 11 Manor Farm Close, Waterloo, Ashton-Under-Lyne



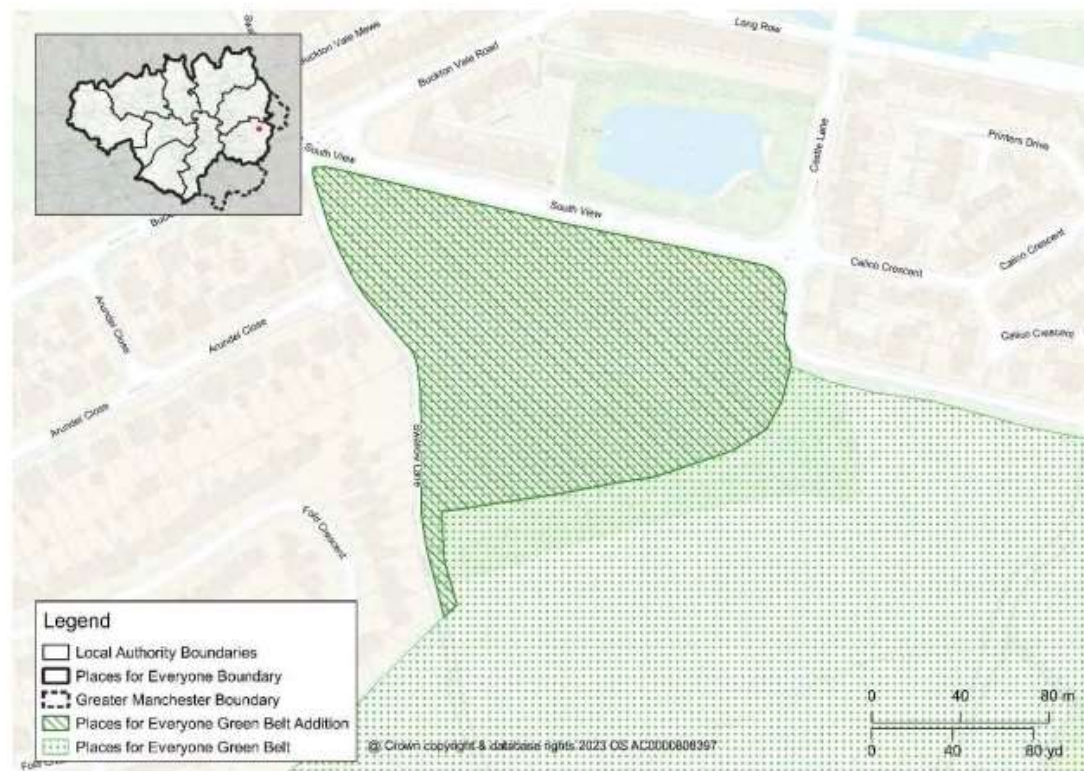
GBA 12 – Cowbury Green, Stalybridge

Picture B.13 GBA 12 Cowbury Green, Long Row, Carrbrook, Stalybridge



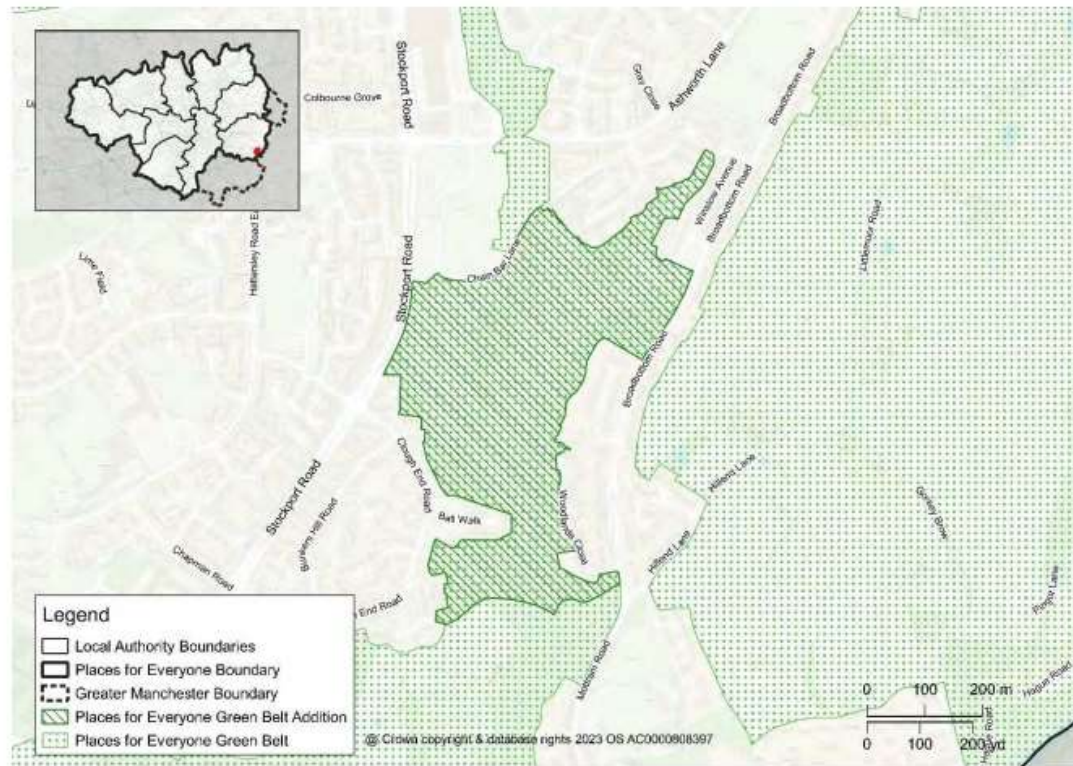
GBA 13 – Woodview, Stalybridge

Picture B.14 GBA 13 Woodview, South View, Carrbrook, Stalybridge



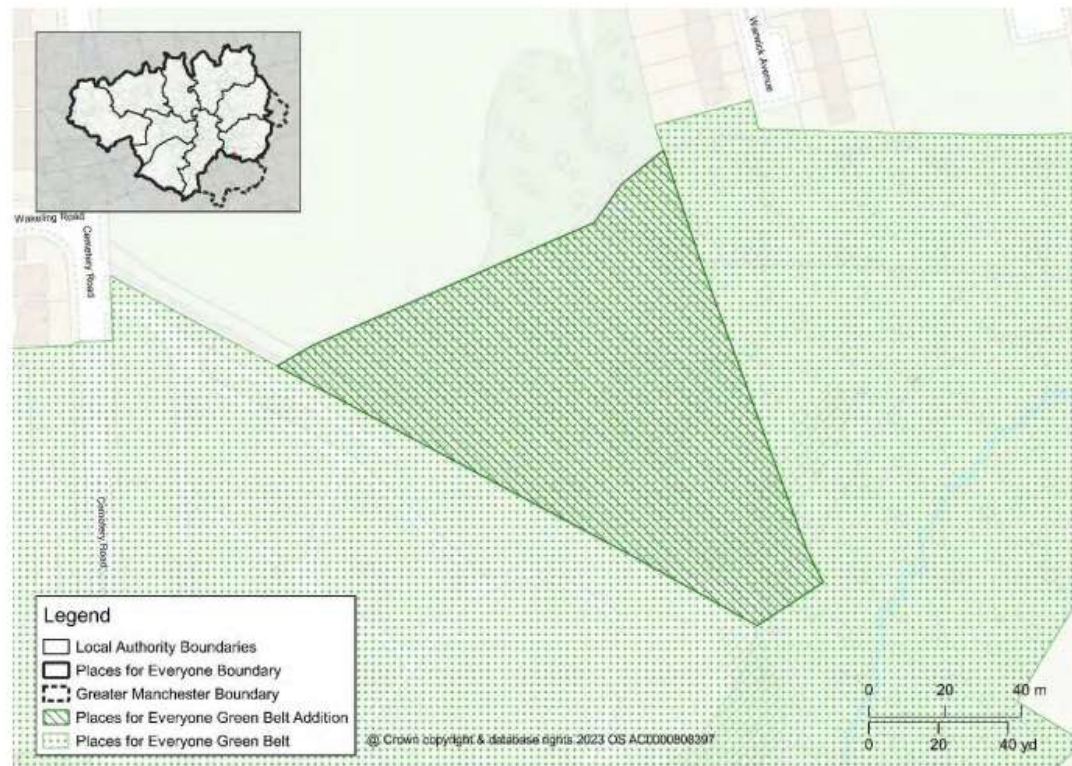
GBA 14 – Broadbottom Road, Broadbottom

Picture B.15 GBA 14 Broadbottom Road, Broadbottom



GBA 15 – Cemetery Road, Denton

Picture B.16 GBA 15 Cemetery Road, Denton



GBA 17 – Ashworth Lane, Mottram

Picture B.18 GBA 17 Ashworth Lane, Mottram



Questions

Page 40



Denton Levelling Up Fund

Neighbourhood Forum Update

March 2024

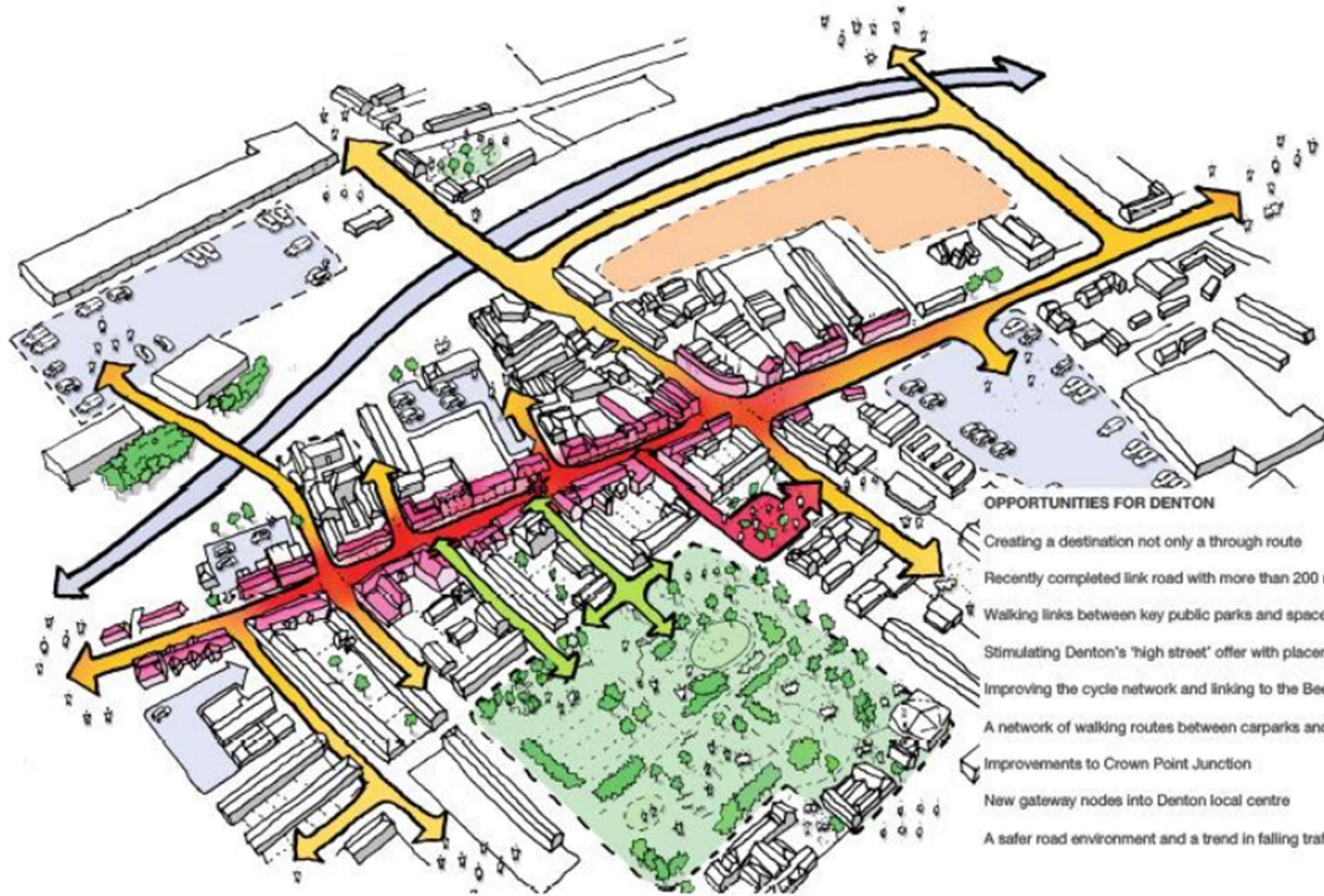


Background

- In November 2023 the Council received notification of the provisional award of £16.8m from the Levelling Up Fund, Round Three for Denton Town Centre.
- Award based on the Council's submission to Round 2 of the Fund in July 2022.
- Original bid focused on public realm and active travel improvements to capture benefits from recent investment for the Town Centre alongside investment at Festival Hall and Denton Town Hall to make best use of the Council's estate.



Concept Plan



Current Status

- The award remains provisional at this stage, subject to project validation, subsidy control checks, and departmental sign-off.
- Since submission of the original bid the potential West Locality Family Hub identified for Festival Hall has been accommodated elsewhere.
- Condition of Festival Hall has also deteriorated further since the 2022 bid.
- A need to revisit the scope of intervention at the Festival Hall site to ensure it provides a long term sustainable future that could result in the site being repurposed for an alternative use
- This would also release some of the funding previously allocated to Festival Hall to wider town centre public realm works helping to address cost inflation since original bid.

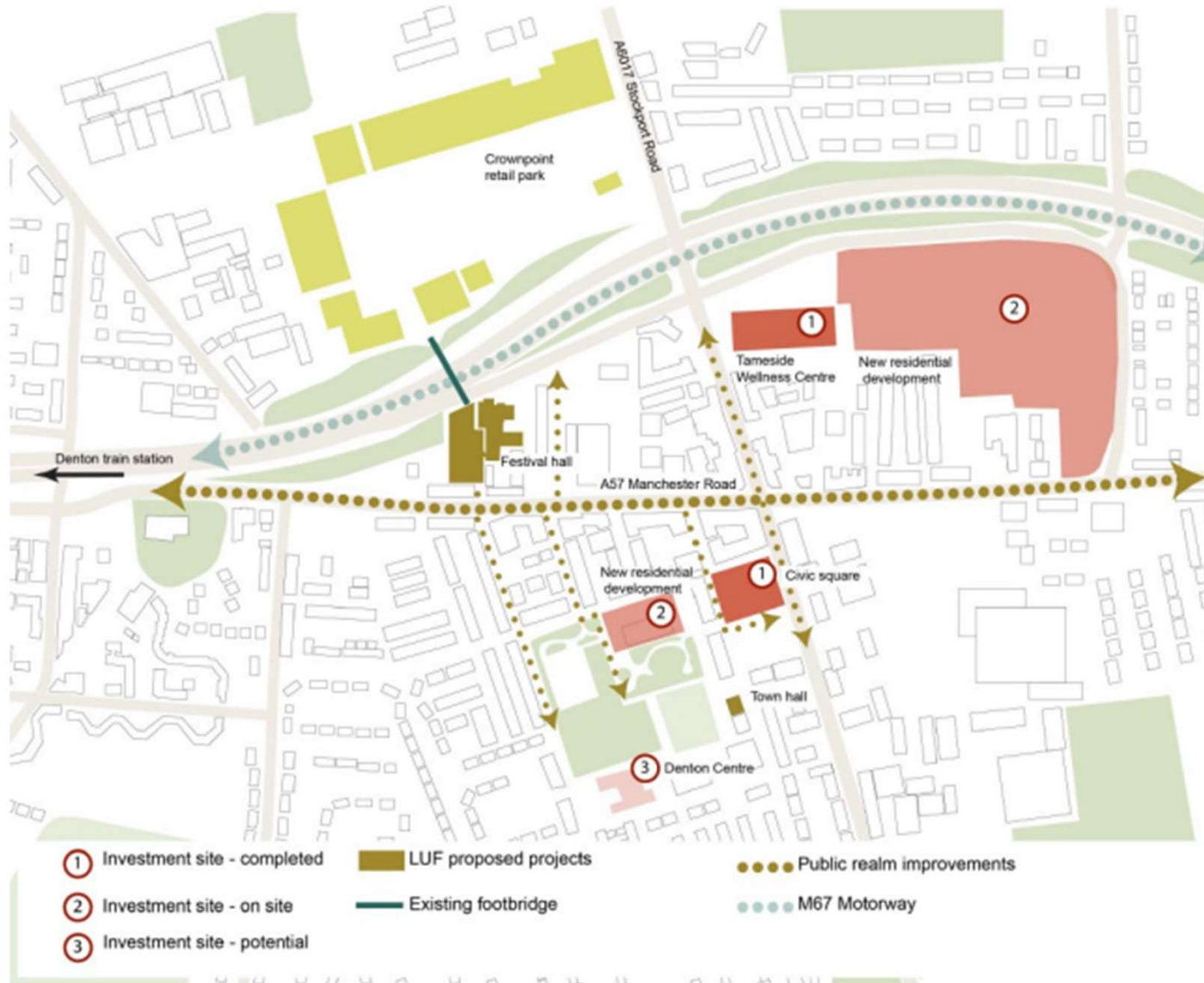


Proposed Interventions

Proposal	Description	Funding £'m
Public realm improvements and A57 Crown Point	<ul style="list-style-type: none"> Provision of public realm improvements, improved pedestrian routes and greenspace enhancements. Support the Denton MCF Crown Point scheme proposals. 	15.2
Festival Hall	<ul style="list-style-type: none"> Funding towards work at the Festival Hall site to provide a long term sustainable future for this location that supports the wider neighbourhood. 	0.8
Denton Town Hall	<ul style="list-style-type: none"> Funding towards improvements to Denton Town Hall supporting increased use. 	0.8
TOTAL		16.8



LUF Interventions



Next Steps

- Project validation check with Government being finalising to confirm any variation to the original bid concept, Market Subsidy assessment and assessment of deliverability by March 2026.
- On completion of project validation, if successful the Council will need to agree and sign the relevant grant funding documentation.
- Following project validation is confirmed, delivery programme to be prepared as a priority action.
- Initial Festival Hall feasibility study to be prepared.
- Denton Town Hall review of space to optimise community benefits.
- Public realm and movement strategy to identify specific scope of interventions, mindful of lessons from recent schemes in the Borough.



This page is intentionally left blank